

P2 & P3 Meet-The-Parents 2024

19 January 2024

Leaders of Character, Championing Service and Excellence





Programme Flow

3.00 pm to 4.00 pm	Briefing by School Leaders & Year Head	School Briefing Level Programmes, Communications & SOPs
4.00 pm to 4.30 pm	Briefing by respective Form Teachers	Routines & Expectations, Homework Policy
<ul style="list-style-type: none">• Slides on curriculum updates will be posted online• Should you have any queries, please email the respective academic Head of Department or Subject Teacher		



2R1

Mrs Celine Lim Mdm Nurashikin



2R3

Mdm Tan Poh Soon Ms Lim Hwee Tin Tina



Form Teachers of Primary 2



2R2

Mdm Wong Peh Yan Mdm Nor Iqmalia



2I

Mdm Zahrah Bte Md Abbas Miss Goh Phoebe



Form Teachers of Primary 2

2C

Mrs Bek Xiu Ling

Mdm Zubaidah



2H

Mdm Ong Bee Hoo

Mrs Evie Goh



2G

Mrs Ong Cui Ling

Mdm Nailul



3R1

Miss Low Kin Eng Miss Emily Ambrose



3R2

Miss Sarah Mrs Eileen Yap



3R3

Mdm Teo Siew Yeun Mrs Julie Ling



3I

Mdm Jorah Ms Seah Jia Xin

Form Teachers of Primary 3



3C

Mr Lee Eng Tiong Miss Quek Siew Lan

Our Belief at PVPS

Our School Philosophy

Every Child Matters

Our Mission

**To nurture future-ready students,
anchored on values**

Our Values

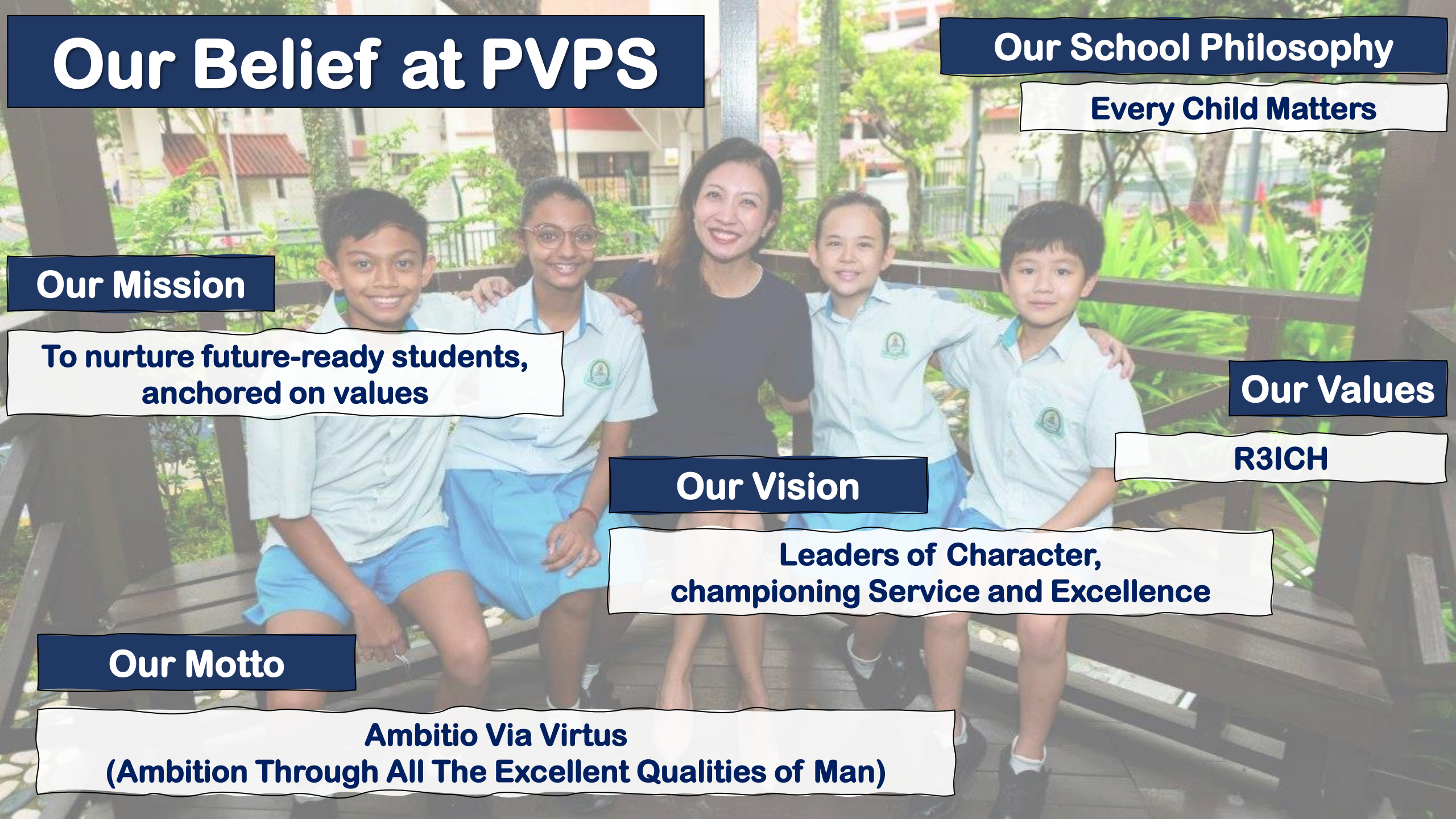
R3ICH

Our Vision

**Leaders of Character,
championing Service and Excellence**

Our Motto

**Ambitio Via Virtus
(Ambition Through All The Excellent Qualities of Man)**



Preparing the PVPS Student for The Future





grit
/grit/

: mental toughness and courage
: firmness of mind or spirit; unyielding
courage in the face of hardship or danger



adaptability

/əˌdaptəˈbɪlɪti/

: the quality of being able to adjust to new conditions.



confidence

/'kɒnfɪd(ə)ns/

- : the feeling or belief that one can have faith in or rely on someone or something**



A Thousand NO's



written by
DJ CORCHIN

illustrated by
DAN DOUGHERTY



What will you do if you are faced with 'NO's?



A birth defect made writing a struggle. Then he took the PSLE



Despite initial struggles, Park View Primary School pupil Ean Chan Yi An has seized every opportunity to learn new things. PHOTO: LIANHE ZAOBAO

After receiving his results, Ean said he was happy that he got into posting group 3 and that he managed to score AL 2 – the second-best grade – in his favourite subject, mathematics.

He added that his parents helped him prepare for the PSLE by not making him stressed about how many hours he had to study each day. They also taught him how to deal with people who might stare at him because of the condition of his hands.

“Now, when people stare at me, I will turn to them and smile. Maybe they’re just curious about why my hands are like this,” said Ean.

When asked what he will miss about PVPS, he said that he will miss his friends and teachers. He recounted an incident when his classmate of four years, Jaime Wong, 12, offered to carry his food to a table during recess.

“I have learnt that there are a lot of kind people in this world. I am very thankful to my teachers and friends, as they have journeyed with me for the past six years.”

A firm believer in the concept that every problem has a solution, he looks forward to pursuing a career in technology where he can develop smart solutions for people with disabilities.

Said his mother, Madam Christine Wong, 50, a pre-school educator, of her only child: “Ean has matured a lot these past six years. He can do most things independently, and he can handle stressful situations on his own.”



“No” is not the end



@bigpandaandtinydragon

Don't let 'No's stop you from trying

"This garden is beautiful," said Tiny Dragon.
Big Panda nodded. "And we only found it because we
went the wrong way so many times."

jamesnorbury.com | @bigpandaandtinydragon | facebook.com/BigPandaAndTinyDragon



@bigpandaandtinydragon

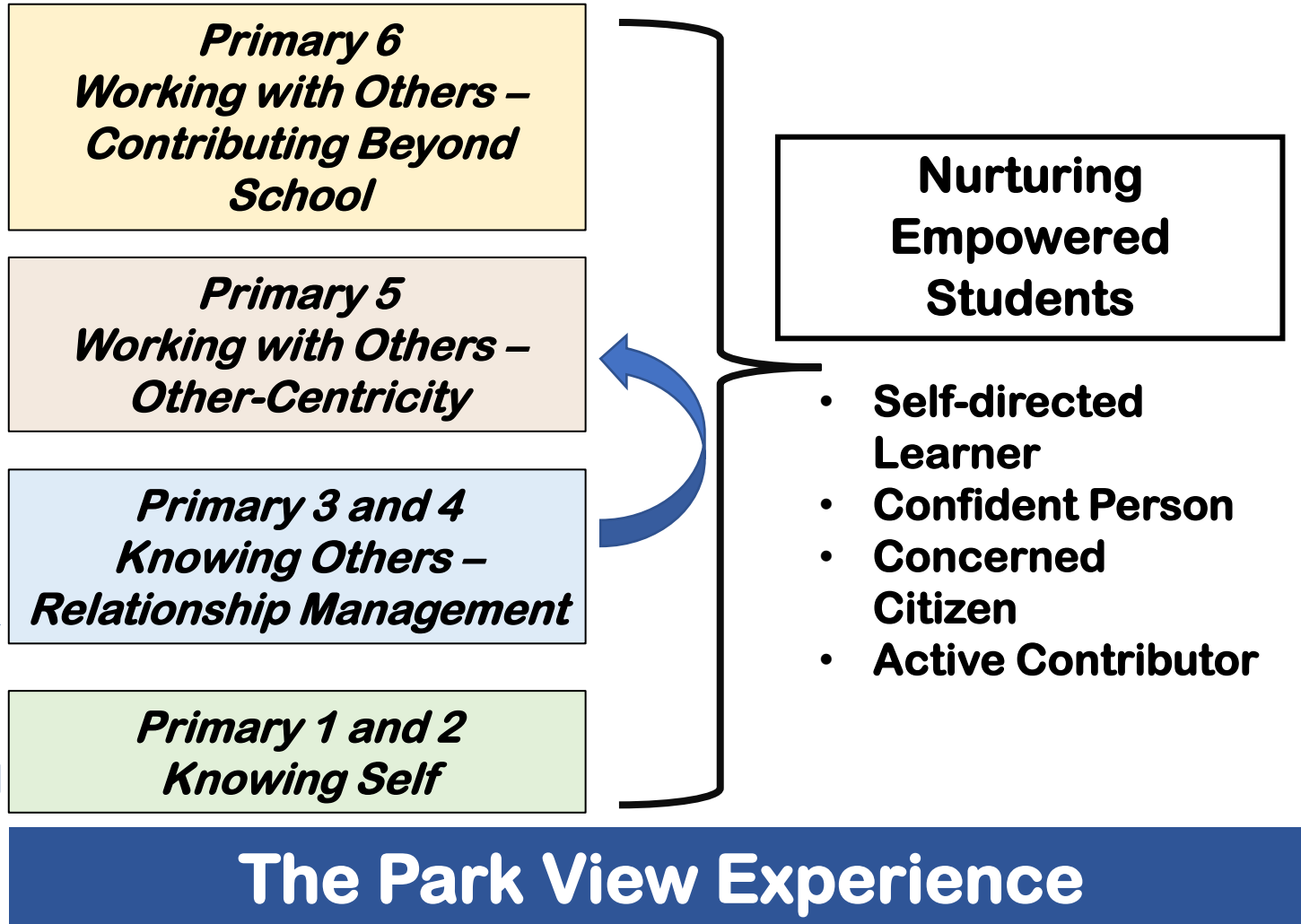
How do we want to start the year?

"The path ahead looks difficult," said Big Panda.
"No matter how hard it gets," said Tiny Dragon,
"we'll face it together."

jamesnorbury.com | [@bigpandaandtinydragon](https://www.instagram.com/bigpandaandtinydragon) | [facebook.com/BigPandaAndTinyDragon](https://www.facebook.com/BigPandaAndTinyDragon)

Vision: Leaders of Character, Championing Service & Excellence

Mission: To Nurture Future-Ready Students, Anchored on Values



PVPS Student Outcomes

Our Values: R³ICH



Respect for All

Responsibility in Actions

Resilience in Adversity

Integrity Our Core

Care for Community

Harmony in Diversity

Holistic Support for Your Child in School



- Lifeskills
- Social skills
- Peer Support Programme
- P2 Learning Support Prog (LSP)
- P2 Learning Support Math (LSM)
- P3 School-based Dyslexia Remediation (SDR)





Parents as Partners in nurturing our children, together

Care and Commitment. Communication and Collaboration

Direct. Truthful. Caring

- Support and work with the teachers
- Support and persevere with your child

our focus and common interest:

the best for our children

Working Together to Support your Child

*“Alone we can do so little,
together we can do so much.”*

- Helen Keller, American Author





Assessment Overview

Primary 2 PVPS Assessment Overview



- Assessment is to inform child's progress for forward action for improvement.
- **Bite-sized** Holistic Assessment (HA) such as pen and paper, and performance tasks are scheduled and spread out in the course of the year.
- **Non-weighted** HA with qualitative descriptors and/or remarks to inform child's progress.

Primary 3 PVPS Assessment Overview



Term 1		Term 2		Term 3		Term 4	
Mode	Subject & Weighting	Mode	Subject & Weighting	Mode	Subject & Weighting	Mode	Subject & Weighting
HA	EL (10%) MATH (10%) SCIENCE (10%) CL/ML/TL (10%)	HA	EL (15%) MATH (15%) SCIENCE (15%) CL/ML/TL (15%)	HA	EL (15%) MATH (15%) SCIENCE (15%) CL/ML/TL (15%)	EYE	EL (60%) MATH (60%) SCIENCE (60%) CL/ML/TL (60%)

Primary 2 Edusave Merit Bursary (EMB) and Good Progress Award (GPA)



Intent:

- To celebrate a child's learning milestones
- To encourage progress and effort

Criteria:

- Demonstrate good conduct
- EMB - Consistently demonstrate positive learning dispositions in the course of the year
- GPA – Show the greatest improvement in learning dispositions in the course of the year
- Attendance

Primary 3 Good Progress Award (GPA)



Intent:

- To celebrate a child's learning milestones
- To encourage progress and effort

Criteria:

- Demonstrate good conduct
- GPA – Show the greatest improvement in learning dispositions in the course of the year
- Attendance

Primary 3: Gifted Education Programme (GEP)



Objectives

- To identify suitable students with high intellectual potential

Important Pointers

- Screening and Selection Exercises will be based on the Primary 1 to Primary 3 English Language and Mathematics syllabuses
- Not compulsory
- GEP Screening Exercise – 15 Aug 2024 (tentative)
- GEP Selection Exercise – 15 Oct & 18 Oct 2024 (tentative)
- More details will be given in July via PG



Class Allocation for Primary 2 and Primary 3

- All P2s will be placed in P3 classes on a 'random allocation' basis.
- 2024 P3 classes are of mixed ability.
- P3 level will move up one level en-bloc. They will stay with their classmates as they move onto P4.



Level Programmes and Learning Journeys



Primary 2

Primary 2 Programme for Active Learning (PAL)

- **Objectives**

- Provide students with broad exposure and experiences through fun and varied activities in two broad areas:
 - Sports & Games and Outdoor Education, and
 - Performing Arts (Music and Dance) and Visual Arts
- Facilitate students' holistic development in the five domains: moral, cognitive, physical, social and aesthetics
- Provide varied avenues for students to develop social and emotional competencies



Primary 2

Programme for Active Learning (PAL)



- Learning Outcomes
- Exhibit confidence in what they do and express themselves effectively
- Exhibit curiosity and positive attitudes to learn
- Enjoy group experiences and teamwork



PAL broadens the learning experiences of our children and positively influences their future experiences.



Outdoor Education



Visual Arts



Outdoor Education



**Creative Movement
and Sports**



Primary 2

Enrichment Programmes

Within Curriculum Hours

Budding Chef



Wushu



Speech & Drama





P2 Broadway

Primary 2: Values-in-Action (VIA): CARE



Objectives:

- To apply their values at home as part of their journey in becoming supportive family members
- CARE stands for Contribute, Appreciate, Respect and Engage

What will your child be doing?

- Life Skills @ Home





Primary 3



Primary 3: Integrated Project Work (IPW)

Objectives

- Encourage creative and innovative thinking amongst students
- Provide opportunities for collaborative and self-directed learning
- Combine knowledge from multiple subject areas to lead and promote good causes (Active Citizenship)





Primary 3: Integrated Project Work (IPW)

What will your child be doing?

PE - Physical Health and Fitness

Healthy Eating, Design Thinking - conduct survey, analysis and planting Xiao Bai Cai

Science

Plant life cycle - Monitoring and recording the growth process of the vegetable



Week 4 to 5

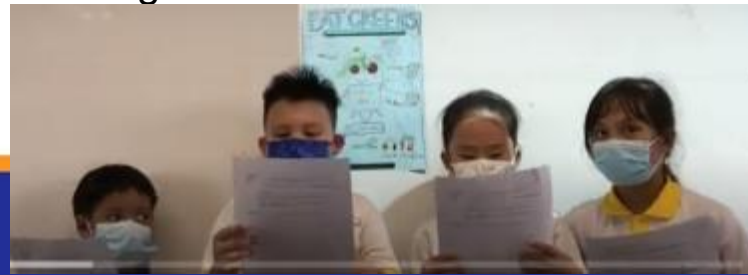
Week 5 to 8

Week 9 to 10



English

Writing and oral presentation of a persuasive text to encourage friends to include greens in their diet.



Week 5 to 10

Math

Financial Literacy (budgeting), creating a salad for a party. Estimating and weighing (Mass) harvested Xiao Bai Cai.





Primary 3: Camp Ignite-Cohort Leadership Programme

Objectives:

- Equip students with knowledge and skills in various areas of leadership.
- interact and bond with peers through activities involving teamwork and collaboration.



Swimsafer Programme for Pri 3 (Semester 2)

Objectives:

- National Water Safety Programme designed to emphasize the **importance of safety around aquatic environments**.
- Aims to teach **swimming proficiency** and **water survival skills** in a fun manner.
- Further details will be briefed at the end of Term 2.



Students learning the basic kick pattern in freestyle.



Students learning the freestyle arm.



A student holding her breath and kicking her way towards the coach.



A student experiencing with a personal device.

P3 Values-in-Action (VIA): Adopt-A-Plot



Objectives:

- To develop and instil a **sense of care and respect for the environment** through caring for the plants in school
- To promote **social awareness and relationship building competencies and character** among students through VIA activities



P2 Level Programmes



Cognitive	Physical	Aesthetics	Social & Moral	Leadership
<ul style="list-style-type: none">• MS Word• Basic features of Ipad• Google Chrome• Speech & Drama	<ul style="list-style-type: none">• PVPS Olympics• PVPS Family Run & Walk Challenge• Wushu• Sports & Games	<ul style="list-style-type: none">• Dance• Visual Art	<ul style="list-style-type: none">• Budding Chef• Outdoor Education• Social Skills• Peer Support Relationships	<ul style="list-style-type: none">• General Leadership Training• Class Committee Leaders



P3 Level Programmes



Cognitive	Physical	Aesthetics	Social & Moral	Leadership
<ul style="list-style-type: none"> Literature Appreciation STAR Problem Solving MS Powerpoint Internet Explorer 	<ul style="list-style-type: none"> PVPS Olympics PVPS Family Run & Walk Challenge 	<ul style="list-style-type: none"> Printmaking Digital Art Digital Music Ukulele 	<ul style="list-style-type: none"> Cyber Wellness Peers Support Relationship Social Skills 	<ul style="list-style-type: none"> General Leadership Training Class Committee Leaders





Learning Journeys

Objectives

- Support Teaching & Learning process
- Provide varied authentic learning experiences
- Relate learning to real-world contexts, and make sense of the learning
- Develop values, 21st century skills and social-emotional learning (SEL)



Learning Journeys (Tentative)

P2

- S.E.A Aquarium @ RWS
- Science Centre

P3

- Singapore Discovery Centre
- Science Centre
- Social Studies LJ to Sustainable City



COMMUNICATIONS AND SOPs



Partnership & Communication



Information on School Programmes and Activities

- Letter to Parents will be issued via Parents Gateway
- Available on our school website
<http://www.parkviewpri.moe.edu.sg>

Contacting or making appointments with teachers

- Message in Student's Handbook or email
- Teachers' email addresses are listed on our school website.

Partnership & Communication



Meeting with teachers

Get a visitor pass at the Security Post

Proceed to the General Office

Teacher will meet up with you at the General Office

Note: For security reasons, parents are not allowed to go to areas other than the General Office

Child's Well-being



Child is unwell/ injured/ Early Dismissal

- If your child is unwell or has sustained an injury, the parents /guardians will be informed.
- If your child needs early dismissal, give advance notice to the Form Teacher via email or Student's Handbook.
- Parents are to go to the General office to pick your child.
- Required to sign the 'Permission to Leave School' form before you take the child home.
- No child in this situation is allowed to go home on their own



Absenteeism

- Students are to be in school throughout term time.
- If students must be away from school due to
 - i. medical reasons** – Submit a **medical certificate** (MC) to their FT upon their return to school.
 - no make-up lessons or assessment will be conducted
 - ii. compassionate reasons** (e.g. serious illness of family member)
 - no make-up lessons will be conducted;
 - no worksheets will be given in advance.

Working with the school to know and support your child



Ask the teacher for the best way to contact him/her



Respect the teacher's time, contact the teacher during school operating hours only



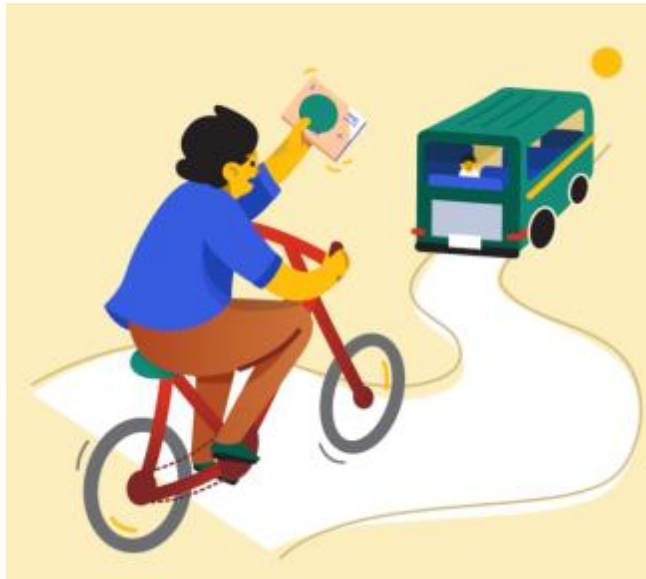
If you keep going to the teacher for updates, your child may miss the chance to learn about responsibility



Teaching Responsibility

Forgetting to bring books or materials

If your child forgets to bring his books/materials, please do NOT bring it to school for him.

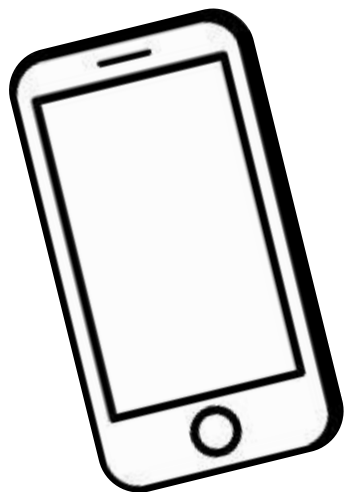


Instill in students a sense of personal responsibility.

Teaching Responsibility



Mobile Phones



While the school allows students to bring mobile phones to school, it is not encouraged. Students who bring mobile phones to school are to adhere to the following guidelines:

- Switched off during lessons/curriculum and CCA.
- Only allowed for communication with caregivers in the canteen before school, during recess or after school.
- If a student is caught using a mobile phone inappropriately, his phone will be kept. You will be contacted to make arrangements to collect the mobile phone.
- The school will not be held accountable for any loss of mobile phones.



Additional Support

- Monitor usage of gadgets
- Monitor usage of time spent online/on games
- Check-in regularly with your child
- Maintain close relationship with teachers
- Balance time for academics & leisure



PVPS Parent Handbook



ABOUT US ▾

CURRICULUM ▾

CO-CURRICULUM ▾

PARK VIEW EXPERIENCE ▾

OUR STAKEHOLDERS ▾

OUR STUDENTS ▾



HOME / OUR STAKEHOLDERS / FOR PARENTS / LETTER TO PARENTS

Letter to Parents

For Parents ^

Letter to Parents

-  [Letter to Parents - 01](#)
-  [Parents Handbook 2024](#)





Curriculum Briefing Videos



PARK VIEW
PRIMARY SCHOOL

ABOUT US ▾

CURRICULUM ▾

CO-CURRICULUM ▾

PARK VIEW EXPERIENCE ▾

OUR STAKEHOLDERS ▾

OUR STUDENTS ▾

HOME / OUR STAKEHOLDERS / FOR PARENTS / LETTER TO PARENTS

Letter to Parents

For Parents ^

Letter to Parents

Information for P1
(Y2024)

MTP 2024

Financial Assistance
Scheme

Insurance Claim

- [Letter to Parents - 01](#)
- [Parents Handbook 2024](#)



Thank you for your support😊